

Ceiling mount bracket

Description This ceiling mount bracket is to be used when mounting home cinema projectors to the ceiling.

Specifications	Vertical correction angle:	+5°, -20°
	Horizontal slant correction angle:	±10°
	Horizontal turn correction angle:	±5°
	Dimensions (W x H x D):	
	With the PT-AE1000	468 x 418-498 x 195 mm (18-7/16" x 16-16/32"-19-19/32" x 7-11/16")
	With the PT-AX100	306 x 306-386 x 182.5 mm (12-1/16" x 12-1/16"-15-3/16" x 7-3/16")
Weight:	With the PT-AE1000	2.7 kg (6.0 lbs)
	With the PT-Ax100	2.1 kg (4.6 lbs)

Weights and dimensions shown are approximate. Specifications subject to change without notice.

Parts	Attachment plate1	Safety fitting C for the PT-AE10001
	Projector mount bracket1	Washer-fitted hexagonal bolts (M6 x 12)15
	Adjuster pole A1	Hexagonal bolts (M6 x 8)4
	Adjuster pole B1	Washer-fitted screws (M4 x 10)10 (6 when used with the PT-AX100)
	Angle adjuster A1	Wire rope1
	Angle adjuster B1	Flat wire clip2
	Safety fitting for the PT-AX1001	Clamp tube2
	Safety fitting A for the PT-AE10001		
	Safety fitting B for the PT-AE10001		

Caution:

- All mounting work must be done by a qualified technician.
- Ensure that the mounting (ceiling) area has sufficient strength.
- Read the enclosed mounting instructions carefully before starting the mounting procedure.
- When the system is no longer to be used, have a qualified technician promptly remove and dispose of it.
- Do not use a power screwdriver or impact screwdriver to tighten screws. A torque screwdriver or similar tool should be used.

Dimensions

Illustration shows the ET-PKX100 attached to the PT-AE1000.

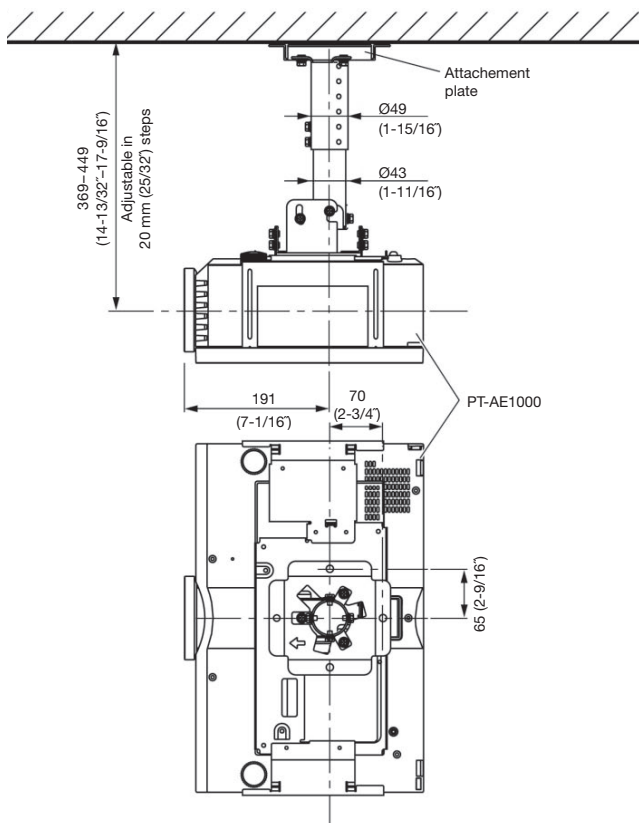
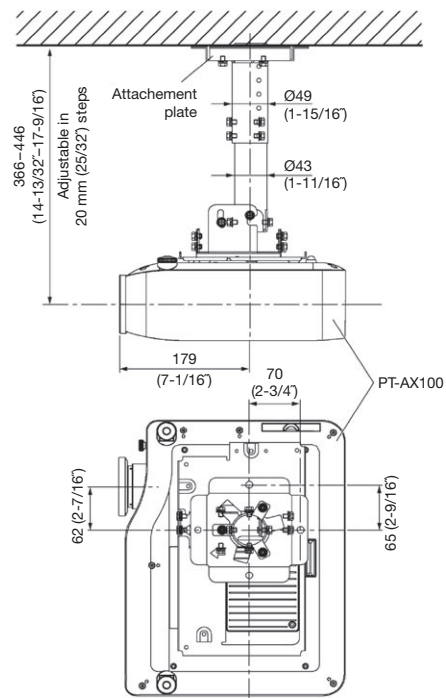


Illustration shows the ET-PKX100 attached to the PT-AX100.



unit : mm (inch)
NOTE: This illustration is not drawn to scale.

Dimensions

Attachment plate

