

Ceiling mount bracket

Description

This ceiling mount bracket is to be used when mounting home cinema projectors to the heigh ceiling.

Specifications	Vertical correction angle:	+20°, -5°
	Horizontal slant correction angle:	±10°
	Horizontal turn correction angle:	±5°
	Dimensions (W x H x D):	435 x 346-426 x 254 mm (17-1/8" x 13-5/8"-16-25/32" x 10")
	Weight:	2.7 kg (6.0 lbs)

Weights and dimensions shown are approximate. Specifications subject to change without notice.

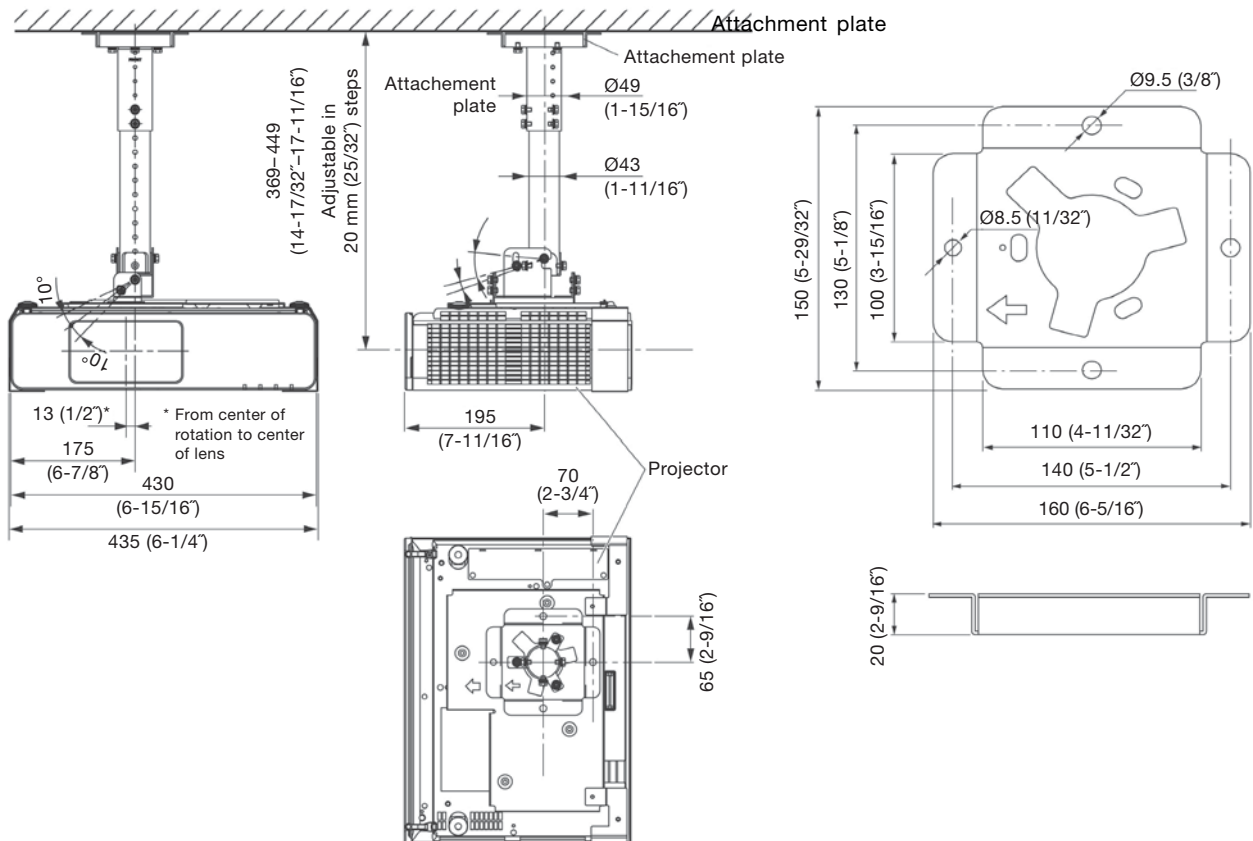
Parts	Attachment plate1	Holding bracket B1
	Projector mount bracket1	Washer-fitted hexagonal bolts (M6 x 12)15
	Adjuster pole A1	Hexagonal screws (M6 x 8)4
	Adjuster pole B1	Washer-fitted screws (M4 x 12)8
	Angle adjuster A1	Wire rope1
	Angle adjuster B1	Flat wire clip2
	Holding bracket A1	Clamp tube2

Caution:

- Mounting should be done by a qualified technician.
- Make sure that the mounting (ceiling) area has sufficient strength.
- Read the enclosed mounting instructions thoroughly before starting.
- When the product is no longer going to be used, have it disposed of quickly by a professional disposal service.
- Do not use an electric screwdriver or impact driver to tighten screws. (Use a torque driver or similar tool.)

Dimensions

Illustration shows the bracket attached to the projector.



unit : mm (inch)

NOTE: This illustration is not drawn to scale.