



# DLP<sup>®</sup> PROJECTOR

## MODEL

# EIP-3000N

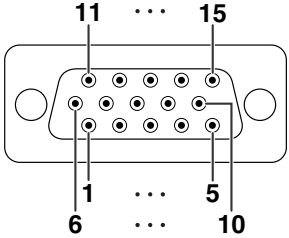
# SETUP MANUAL

<b>Connecting Pin Assignments .....</b>	<b>2</b>	Save Settings and Quit ([S]Save & Quit) .....	22
<b>RS-232C Specifications and Commands .....</b>	<b>3</b>	Quit without Saving Settings ([Q]Quit Unchanged) ..	22
<b>Setting up the Projector Network Environment ...</b>	<b>7</b>	IP Address Setting ([1]IP Address) .....	23
1. Connecting the Projector to a Computer .....	8	Subnet Mask Setting ([2]Subnet Mask) .....	23
2. Setting an IP Address for the Computer .....	9	Default Gateway Setting ([3]Default Gateway) ....	23
3. Setting up a Network Connection for the Projector ..	11	User Name Setting ([4]User Name) .....	23
<b>Controlling the Projector via LAN.....</b>	<b>13</b>	Password Setting ([5>Password) .....	24
Controlling the Projector Using Internet Explorer		RS-232C Baud Rate Setting	
(Version 5.0 or later) .....	13	([6]RS-232C Baud Rate) .....	24
Confirming the Projector Status (Status) .....	14	Projector Name Setting ([7]Projector Name) .....	24
Controlling the Projector (Control) .....	14	DHCP Client Setting ([8]DHCP Client) .....	24
Setting and Adjusting the Projector		Disconnecting All Connections	
(Settings & Adjustments) .....	15	([D]Disconnect All) .....	25
Setting the Security (Network – Security) .....	15	Entering ADVANCED SETUP MENU	
Making General Settings for the Network		([A]Advanced Setup) .....	25
(Network – General) .....	16	Setting Auto Logout Time	
Setting for Sending E-mail when an Error Occurs		(ADVANCED[1]Auto Logout Time) .....	25
(Mail – Originator Settings) .....	16	Data Port Setting (ADVANCED[2]Data Port) .....	25
Setting Error Items and Destination Addresses		Carrying out Network Ping Test	
to which E-mail is to be Sent when an		(ADVANCED[5]Network Ping Test) .....	26
Error Occurs (Mail – Recipient Settings) ...	17	Setting of Accept IP Address (ADVANCED[6]Accept	
Setting Error Items and the URL that are to be		IP Addr(1) – [8]Accept IP Addr(3)) .....	26
Displayed when an Error Occurs		Accepting All IP Addresses	
(Service & Support – Access URL) .....	17	(ADVANCED[9]Accept All IP Addr) .....	26
<b>Setting up the Projector Using RS-232C or Telnet ..</b>	<b>18</b>	Setting of Search Port	
When Connecting Using RS-232C .....	18	(ADVANCED[0]Search Port) .....	27
When Connecting Using Telnet .....	19	Return to Default Settings	
SETUP MENU (Main Menu) .....	20	(ADVANCED[1]Restore Default Setting) .....	27
ADVANCED SETUP MENU .....	20	Return to Main Menu	
View Setting Detail List ([V]View All Setting) .....	21	(ADVANCED[Q]Return to Main Menu) .....	27
Set Items .....	21	<b>Troubleshooting .....</b>	<b>28</b>



# Connecting Pin Assignments

## COMPUTER-RGB/COMPONENT INPUT 1, 2 and COMPUTER-RGB/COMPONENT OUTPUT Terminals: 15-pin mini D-sub female connector



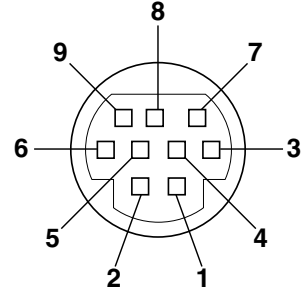
### COMPUTER-RGB Input/Output

1. Video input (red)
2. Video input (green/sync on green)
3. Video input (blue)
4. Not connected
5. Not connected
6. Earth (red)
7. Earth (green/sync on green)
8. Earth (blue)
9. Not connected
10. GND
11. Not connected
12. Bi-directional data
13. Horizontal sync signal: TTL level
14. Vertical sync signal: TTL level
15. Data clock

### Component Input/Output

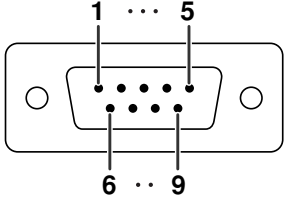
1. P<sub>R</sub> (C<sub>R</sub>)
2. Y
3. P<sub>B</sub> (C<sub>B</sub>)
4. Not connected
5. Not connected
6. Earth (P<sub>R</sub>)
7. Earth (Y)
8. Earth (P<sub>B</sub>)
9. Not connected
10. Not connected
11. Not connected
12. Not connected
13. Not connected
14. Not connected
15. Not connected

## RS-232C Terminal: 9-pin mini DIN female connector



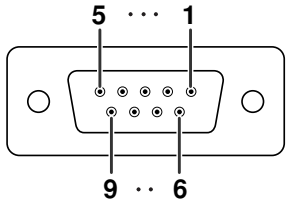
Pin No.	Signal	Name	I/O	Reference
1				Not connected
2	RD	Receive Data	Input	Connected to internal circuit
3	SD	Send Data	Output	Connected to internal circuit
4				Not connected
5	SG	Signal Ground		Connected to internal circuit
6				Not connected
7	RS	Request to Send		Connected to CS in internal circuit
8	CS	Clear to Send		Connected to RS in internal circuit
9				Not connected

## RS-232C Terminal: 9-pin D-sub male connector of the DIN-D-sub RS-232C adaptor



Pin No.	Signal	Name	I/O	Reference
1				Not connected
2	RD	Receive Data	Input	Connected to internal circuit
3	SD	Send Data	Output	Connected to internal circuit
4				Not connected
5	SG	Signal Ground		Connected to internal circuit
6				Not connected
7	RS	Request to Send		Connected to CS in internal circuit
8	CS	Clear to Send		Connected to RS in internal circuit
9				Not connected

## RS-232C Cable recommended connection: 9-pin D-sub female connector



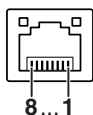
Pin No.	Signal	Pin No.	Signal
1	CD	1	CD
2	RD	2	RD
3	SD	3	SD
4	ER	4	ER
5	SG	5	SG
6	DR	6	DR
7	RS	7	RS
8	CS	8	CS
9	CI	9	CI

### Note

- Depending on the controlling device used, it may be necessary to connect Pin 4 and Pin 6 on the controlling device (e.g. computer).



## LAN Terminal : 8-pin RJ-45 modular connector



Pin No.	Signal	Pin No.	Signal
1	TX+	5	
2	TX-	6	RX-
3	RX+	7	
4		8	

# RS-232C Specifications and Commands

## Computer control

A computer can be used to control the projector by connecting an RS-232C serial control cable (cross type, commercially available) to the projector. (See page 26 on the owner's manual of the projector for connection.)

## Communication conditions

Set the serial port settings of the computer to match that of the table.

Signal format: Conforms to RS-232C standard.

Parity bit: None

Baud rate\*: 9,600 bps / 115,200 bps

Stop bit: 1 bit

Data length: 8 bits

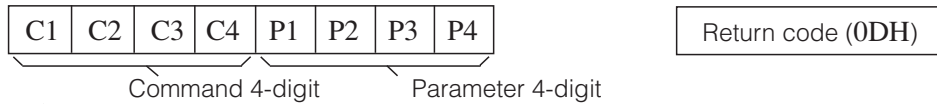
Flow control: None

\*Set the projector's baud rate to the same rate as used by the computer.

## Basic format

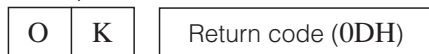
Commands from the computer are sent in the following order: command, parameter, and return code. After the projector processes the command from the computer, it sends a response code to the computer.

Command format



Response code format

Normal response



Problem response (communication error or incorrect command)



### Info

- When controlling the projector using RS-232C commands from a computer, wait for at least 30 seconds after the power has been turned on, and then transmit the commands.
- When more than one code is being sent, send each command only after the response code for the previous command from the projector is verified.
- "POWR?????" "TABN \_\_\_ 1" "TLPS \_\_\_ 1" "TPOW \_\_\_ 1" "TLPN \_\_\_ 1" "TLTT \_\_\_ 1" "TLTL \_\_\_ 1" "TNAM \_\_\_ 1" "MNRD \_\_\_ 1" "PJN0 \_\_\_ 1"

When the projector receives a command shown above:

- \* The on-screen display will not disappear.
- \* The "Auto Power Off" timer will not be reset.

### Note

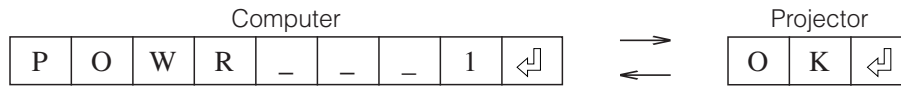
- If an underbar ( \_ ) appears in the parameter column, enter a space.
- If an asterisk ( \* ) appears in the parameter column, enter a value in the range indicated in brackets under Control Contents.
- \*1 For setting the projector name, send the commands in the order of PJN1, PJN2 and PJN3.
- \*2 Parameters of CLR Temp settings are as follows.

CLR Temp	Parameter	CLR Temp	Parameter
5500K	_0 5 5	8500K	_0 8 5
6500K	_0 6 5	9300K	_0 9 3
7500K	_0 7 5	10500K	_1 0 5

# RS-232C Specifications and Commands

## Commands

Example: When turning on the projector, make the following setting.



CONTROL CONTENTS	COMMAND	PARAMETER	RETURN	
			Power ON	Standby mode (or 30-second startup time)
Power Off	P O W R	0	OK or ERR	OK
Power On	P O W R	1	OK	OK or ERR
Power Status	P O W R	? ? ? ?	1	0
Projector Condition	T A B N	0	0 : Normal, 1 : Temp High, 8 : Lamp Life 5% or less, 16 : Lamp Burnt-out, 32 : Lamp Ignition Failure	0 : Normal, 1 : Temp High, 2 : Fan Error, 4 : Lamp Cover Open, 8 : Lamp Life 5% or less, 16 : Lamp Burnt-out, 32 : Lamp Ignition Failure, 64 : Temp Abnormally High
Lamp Status	T L P S	0	0 : Off, 1 : On, 2 : Retry, 3 : Waiting, 4 : Lamp Error	0 : Off, 4 : Lamp Error
Lamp Power Status	T P O W	1	1 : On, 2 : Cooling, 3 : Shutting Down	0 : Standby
Lamp Quantity	T L P N	1	1	
Lamp Usage Time (Hour)	T L T T	0 - 9999	(Integer)	
Lamp Life (Percentage)	T L T L	0% - 100%	(Integer)	
Model Name Check	T N A M	1	EIP3000N	
Model Name Check	M N R D	1	EIP-3000N	
Projector Name Setting 1 (First four characters) *1	P J N 1	* * * *	OK or ERR	
Projector Name Setting 2 (Middle four characters) *1	P J N 2	* * * *	OK or ERR	
Projector Name Setting 3 (Last four characters) *1	P J N 3	* * * *	OK or ERR	
Projector Name Check	P J N 0	1	Projector Name	
INPUT 1 (RGB1)	I R G B	1	OK or ERR	ERR
INPUT 2 (RGB2)	I R G B	2	OK or ERR	ERR
INPUT RGB Check	I R G B	? ? ? ?	1 : RGB1 (INPUT1), 2 : RGB2 (INPUT2), ERR	ERR
INPUT 3 (Video1)	I V E D	1	OK or ERR	ERR
INPUT 4 (Video2)	I V E D	2	OK or ERR	ERR
INPUT Video Check	I V E D	? ? ? ?	1 : Video1 (INPUT3), 2 : Video2 (INPUT4), ERR	ERR
INPUT Mode Check	I M O D	? ? ? ?	1 : RGB, 2 : Video	ERR
INPUT Check	I C H K	? ? ? ?	1 : INPUT1, 2 : INPUT2, 3 : INPUT3, 4 : INPUT4	ERR
INPUT 1 Adjustment Reset	R A R E	1	OK or ERR	ERR
INPUT 2 Adjustment Reset	R B R E	1	OK or ERR	ERR
INPUT 3 Adjustment Reset	V A R E	1	OK or ERR	ERR
INPUT 4 Adjustment Reset	V B R E	1	OK or ERR	ERR
All Reset	A L R E	1	OK or ERR	ERR
Volume (0 - 60)	V O L A	* *	OK or ERR	ERR
Volume up / down (-10 - +10)	V O U D	* * *	OK or ERR	ERR
Keystone (-127 - +127)	K E Y S	* * *	OK or ERR	ERR
AV Mute Off	I M B K	0	OK or ERR	ERR
AV Mute On	I M B K	1	OK or ERR	ERR
Freeze Off	F R E Z	0	OK or ERR	ERR
Freeze On	F R E Z	1	OK or ERR	ERR
Auto Sync Start	A D J S	1	OK or ERR	ERR
INPUT 1 Resize : Normal	R A S R	1	OK or ERR	ERR
INPUT 1 Resize : Stretch	R A S R	2	OK or ERR	ERR
INPUT 1 Resize : Border	R A S R	6	OK or ERR	ERR
INPUT 2 Resize : Normal	R B S R	1	OK or ERR	ERR
INPUT 2 Resize : Stretch	R B S R	2	OK or ERR	ERR
INPUT 2 Resize : Border	R B S R	6	OK or ERR	ERR
INPUT 3 Resize : Normal	R A S V	1	OK or ERR	ERR
INPUT 3 Resize : Stretch	R A S V	2	OK or ERR	ERR
INPUT 3 Resize : Border	R A S V	3	OK or ERR	ERR
INPUT 4 Resize : Normal	R B S V	1	OK or ERR	ERR
INPUT 4 Resize : Stretch	R B S V	2	OK or ERR	ERR
INPUT 4 Resize : Border	R B S V	3	OK or ERR	ERR
INPUT 1 Picture Mode : Standard	R A P S	1 0	OK or ERR	ERR

## RS-232C Specifications and Commands

CONTROL CONTENTS	COMMAND	PARAMETER	RETURN	
			Power ON	Standby mode (or 30-second startup time)
INPUT 1 Picture Mode : Presentation	R A P S	- - - 1 1	OK or ERR	ERR
INPUT 1 Picture Mode : Movie	R A P S	- - - 1 2	OK or ERR	ERR
INPUT 1 Picture Mode : Game	R A P S	- - - 1 3	OK or ERR	ERR
INPUT 1 Picture Mode : sRGB	R A P S	- - - 1 4	OK or ERR	ERR
INPUT 1 Contrast (-30 - +30)	R A P I	- * * *	OK or ERR	ERR
INPUT 1 Bright (-30 - +30)	R A B R	- * * *	OK or ERR	ERR
INPUT 1 Color (-30 - +30)	R A C O	- * * *	OK or ERR	ERR
INPUT 1 Tint (-30 - +30)	R A T I	- * * *	OK or ERR	ERR
INPUT 1 Red (-30 - +30)	R A R D	- * * *	OK or ERR	ERR
INPUT 1 Blue (-30 - +30)	R A B E	- * * *	OK or ERR	ERR
INPUT 1 Sharp (-30 - +30)	R A S H	- * * *	OK or ERR	ERR
INPUT 1 CLR Temp *2	R A C T	- * * *	OK or ERR	ERR
INPUT 1 Bright Boost (0 - 2)	R A W E	- - - *	OK or ERR	ERR
INPUT 1 Progressive : 2D	R A I P	- - - 0	OK or ERR	ERR
INPUT 1 Progressive : 3D	R A I P	- - - 1	OK or ERR	ERR
INPUT 1 Progressive : Film Mode	R A I P	- - - 2	OK or ERR	ERR
INPUT 1 Signal Type : Auto	I A S I	- - - 0	OK or ERR	ERR
INPUT 1 Signal Type : RGB	I A S I	- - - 1	OK or ERR	ERR
INPUT 1 Signal Type : Component	I A S I	- - - 2	OK or ERR	ERR
INPUT 2 Picture Mode : Standard	R B P S	- - - 1 0	OK or ERR	ERR
INPUT 2 Picture Mode : Presentation	R B P S	- - - 1 1	OK or ERR	ERR
INPUT 2 Picture Mode : Movie	R B P S	- - - 1 2	OK or ERR	ERR
INPUT 2 Picture Mode : Game	R B P S	- - - 1 3	OK or ERR	ERR
INPUT 2 Picture Mode : sRGB	R B P S	- - - 1 4	OK or ERR	ERR
INPUT 2 Contrast (-30 - +30)	R B P I	- * * *	OK or ERR	ERR
INPUT 2 Bright (-30 - +30)	R B B R	- * * *	OK or ERR	ERR
INPUT 2 Color (-30 - +30)	R B C O	- * * *	OK or ERR	ERR
INPUT 2 Tint (-30 - +30)	R B T I	- * * *	OK or ERR	ERR
INPUT 2 Red (-30 - +30)	R B R D	- * * *	OK or ERR	ERR
INPUT 2 Blue (-30 - +30)	R B B E	- * * *	OK or ERR	ERR
INPUT 2 Sharp (-30 - +30)	R B S H	- * * *	OK or ERR	ERR
INPUT 2 CLR Temp *2	R B C T	- * * *	OK or ERR	ERR
INPUT 2 Bright Boost (0 - 2)	R B W E	- - - *	OK or ERR	ERR
INPUT 2 Progressive : 2D	R B I P	- - - 0	OK or ERR	ERR
INPUT 2 Progressive : 3D	R B I P	- - - 1	OK or ERR	ERR
INPUT 2 Progressive : Film Mode	R B I P	- - - 2	OK or ERR	ERR
INPUT 2 Signal Type : Auto	I B S I	- - - 0	OK or ERR	ERR
INPUT 2 Signal Type : RGB	I B S I	- - - 1	OK or ERR	ERR
INPUT 2 Signal Type : Component	I B S I	- - - 2	OK or ERR	ERR
INPUT 3 Picture Mode : Standard	V A P S	- - - 1 0	OK or ERR	ERR
INPUT 3 Picture Mode : Presentation	V A P S	- - - 1 1	OK or ERR	ERR
INPUT 3 Picture Mode : Movie	V A P S	- - - 1 2	OK or ERR	ERR
INPUT 3 Picture Mode : Game	V A P S	- - - 1 3	OK or ERR	ERR
INPUT 3 Contrast (-30 - +30)	V A P I	- * * *	OK or ERR	ERR
INPUT 3 Bright (-30 - +30)	V A B R	- * * *	OK or ERR	ERR
INPUT 3 Color (-30 - +30)	V A C O	- * * *	OK or ERR	ERR
INPUT 3 Tint (-30 - +30)	V A T I	- * * *	OK or ERR	ERR
INPUT 3 Sharp (-30 - +30)	V A S H	- * * *	OK or ERR	ERR
INPUT 3 CLR Temp *2	V A C T	- * * *	OK or ERR	ERR
INPUT 3 Bright Boost (0 - 2)	V A W E	- - - *	OK or ERR	ERR
INPUT 3 Progressive : 2D	V A I P	- - - 0	OK or ERR	ERR
INPUT 3 Progressive : 3D	V A I P	- - - 1	OK or ERR	ERR
INPUT 3 Progressive : Film Mode	V A I P	- - - 2	OK or ERR	ERR
INPUT 4 Picture Mode : Standard	V B P S	- - - 1 0	OK or ERR	ERR
INPUT 4 Picture Mode : Presentation	V B P S	- - - 1 1	OK or ERR	ERR
INPUT 4 Picture Mode : Movie	V B P S	- - - 1 2	OK or ERR	ERR
INPUT 4 Picture Mode : Game	V B P S	- - - 1 3	OK or ERR	ERR
INPUT 4 Contrast (-30 - +30)	V B P I	- * * *	OK or ERR	ERR
INPUT 4 Bright (-30 - +30)	V B B R	- * * *	OK or ERR	ERR
INPUT 4 Color (-30 - +30)	V B C O	- * * *	OK or ERR	ERR
INPUT 4 Tint (-30 - +30)	V B T I	- * * *	OK or ERR	ERR

# RS-232C Specifications and Commands

CONTROL CONTENTS	COMMAND	PARAMETER	RETURN	
			Power ON	Standby mode (or 30-second startup time)
INPUT 4 Sharp (-30 - +30)	V B S H	- * * *	OK or ERR	ERR
INPUT 4 CLR Temp *2	V B C T	- * * *	OK or ERR	ERR
INPUT 4 Bright Boost (0 - 2)	V B W E	- - - *	OK or ERR	ERR
INPUT 4 Progressive : 2D	V B I P	- - - 0	OK or ERR	ERR
INPUT 4 Progressive : 3D	V B I P	- - - 1	OK or ERR	ERR
INPUT 4 Progressive : Film Mode	V B I P	- - - 2	OK or ERR	ERR
Clock (-150 - +150)	I N C L	* * * *	OK or ERR	ERR
Phase (-30 - +30)	I N P H	- * * *	OK or ERR	ERR
H-Position (-150 - +150)	I A H P	* * * *	OK or ERR	ERR
V-Position (-60 - +60)	I A V P	- * * *	OK or ERR	ERR
Fine Sync Adjustment Reset	I A R E	- - - 1	OK or ERR	ERR
Auto Sync : Off	A A D J	- - - 0	OK or ERR	ERR
Auto Sync : On	A A D J	- - - 1	OK or ERR	ERR
Internal Speaker : Off	A S P K	- - - 0	OK or ERR	ERR
Internal Speaker : On	A S P K	- - - 1	OK or ERR	ERR
Image Shift (-96 - +96)	L N D S	- * * *	OK or ERR	ERR
OSD Display : Off	I M D I	- - - 0	OK or ERR	ERR
OSD Display : On	I M D I	- - - 1	OK or ERR	ERR
Video System Selection : AUTO	M E S Y	- - - 1	OK or ERR	ERR
Video System Selection : PAL	M E S Y	- - - 2	OK or ERR	ERR
Video System Selection : SECAM	M E S Y	- - - 3	OK or ERR	ERR
Video System Selection : NTSC4.43	M E S Y	- - - 4	OK or ERR	ERR
Video System Selection : NTSC3.58	M E S Y	- - - 5	OK or ERR	ERR
Video System Selection : PAL_M	M E S Y	- - - 6	OK or ERR	ERR
Video System Selection : PAL_N	M E S Y	- - - 7	OK or ERR	ERR
Video System Selection : PAL-60	M E S Y	- - - 8	OK or ERR	ERR
Background Selection : Logo	I M B G	- - - 1	OK or ERR	ERR
Background Selection : Blue	I M B G	- - - 3	OK or ERR	ERR
Background Selection : None	I M B G	- - - 4	OK or ERR	ERR
Lamp Setting : Bright	T H M D	- - - 0	OK or ERR	ERR
Lamp Setting : Eco + Quiet	T H M D	- - - 1	OK or ERR	ERR
Auto Search : Off	I N S E	- - - 0	OK or ERR	ERR
Auto Search : On	I N S E	- - - 1	OK or ERR	ERR
Auto Power Off : Off	A P O W	- - - 0	OK or ERR	ERR
Auto Power Off : On	A P O W	- - - 1	OK or ERR	ERR
Auto Keystone : Off	A T K S	- - - 0	OK or ERR	ERR
Auto Keystone : On	A T K S	- - - 1	OK or ERR	ERR
PRJ Mode : Reverse Off	I M R E	- - - 0	OK or ERR	ERR
PRJ Mode : Reverse On	I M R E	- - - 1	OK or ERR	ERR
PRJ Mode : Invert Off	I M I N	- - - 0	OK or ERR	ERR
PRJ Mode : Invert On	I M I N	- - - 1	OK or ERR	ERR
Language Selection : ENGLISH	M E L A	- - - 1	OK or ERR	ERR
Language Selection : DEUTSCH	M E L A	- - - 2	OK or ERR	ERR
Language Selection : ESPAÑOL	M E L A	- - - 3	OK or ERR	ERR
Language Selection : NEDERLANDS	M E L A	- - - 4	OK or ERR	ERR
Language Selection : FRANÇAIS	M E L A	- - - 5	OK or ERR	ERR
Language Selection : ITALIANO	M E L A	- - - 6	OK or ERR	ERR
Language Selection : SVENSKA	M E L A	- - - 7	OK or ERR	ERR
Language Selection : 日本語	M E L A	- - - 8	OK or ERR	ERR
Language Selection : PORTUGUÊS	M E L A	- - - 9	OK or ERR	ERR
Language Selection : 汉语	M E L A	- - - 10	OK or ERR	ERR
Language Selection : 한국어	M E L A	- - - 11	OK or ERR	ERR
Setup Guide : Off	S E G U	- - - 0	OK or ERR	ERR
Setup Guide : On	S E G U	- - - 1	OK or ERR	ERR
System Sound : Off	S S N D	- - - 0	OK or ERR	ERR
System Sound : On	S S N D	- - - 1	OK or ERR	ERR
RGB Horizontal Frequency Check	T F R Q	- - - 1	x10 <sup>-1</sup> kHz (**.* or ERR)	ERR
RGB Vertical Frequency Check	T F R Q	- - - 2	Hz (**.* or ERR)	ERR
Fan Mode : Normal	H L M D	- - - 0	OK or ERR	ERR
Fan Mode : High	H L M D	- - - 1	OK or ERR	ERR

PJLink™ Compliant:

This product conform with the PJLink standard Class 1 and all Class 1 commands are implemented.

This product confirm with the PJLink standard specification version 1.00.

# Setting up the Projector Network Environment

This section describes the basic procedure for using the projector via the network.

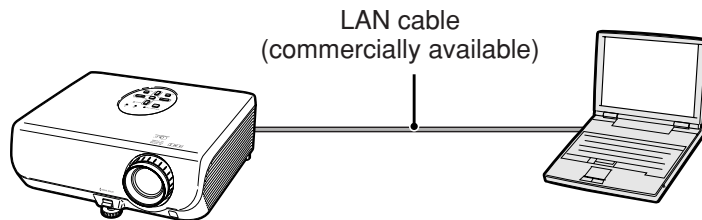
If the network is already constructed, the projector's network settings may need to be changed. Please consult your network administrator for assistance with these settings.

You can make network settings both on the projector and on the computer. The following procedure is for making settings on the computer.

## Network settings on the computer

### 1. Connecting the projector to a computer

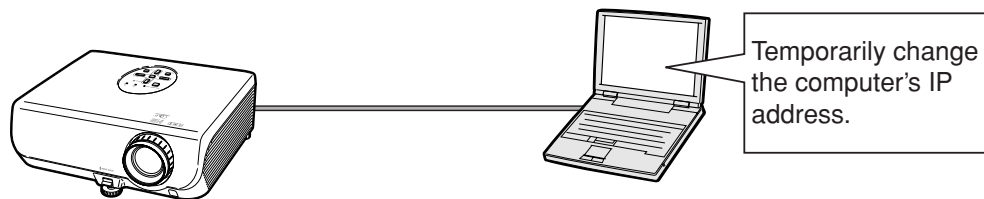
Connect a LAN cable (Category 5, cross-over type) between the computer and projector.



➔ Page 8

### 2. Setting an IP address for the computer

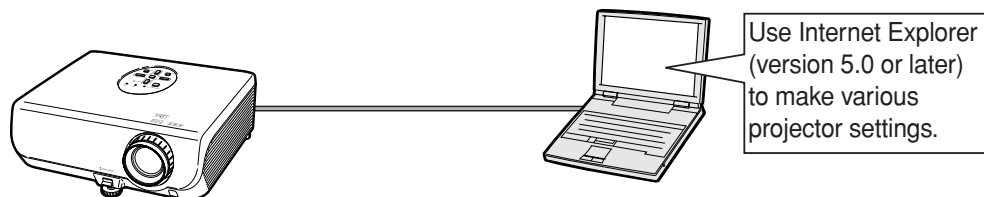
Adjust the IP settings of the computer to enable one-to-one communications with the projector.



➔ Pages 9, 10

### 3. Setting up a network connection for the projector

Adjust the projector network settings to conform to your network.



➔ Page 11

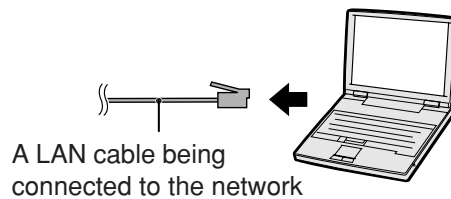
- Microsoft® and Windows® are registered trademarks of Microsoft Corporation in the United States and/or other countries.
- All other company or product names are trademarks or registered trademarks of their respective companies.

# Setting up the Projector Network Environment

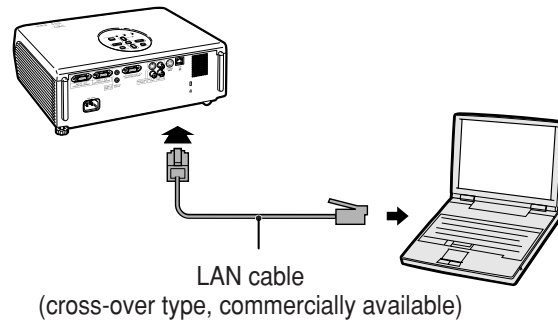
## 1. Connecting the Projector to a Computer

Establishing a one-to-one connection from the projector to a computer. Using a LAN cable (Category 5, cross-over type) you can configure the projector via the computer.

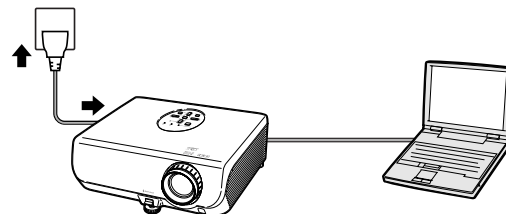
- 1 Disconnect the computer's LAN cable from the existing network.



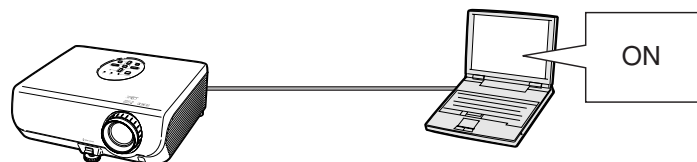
- 2 Connect a LAN cable (a UTP cable, Category 5, cross-over type) to the projector's LAN terminal and connect the other end of the cable to the computer's LAN terminal.



- 3 Plug the power cord into the AC socket of the projector.



- 4 Turn on the computer.



### Info

Confirm that the LINK LED on the rear of the projector illuminates. If the LINK LED does not illuminate, check the following :

- The LAN cable is properly connected.
- The power switches of both the projector and the computer are on.

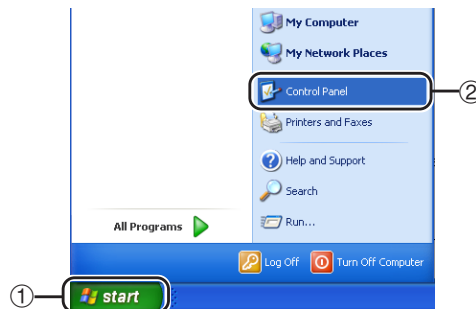
This completes the connection. Now proceed to “2. Setting an IP Address for the Computer”.

## 2. Setting an IP Address for the Computer

The following describes how to make settings in Windows® XP (Professional or Home Edition).

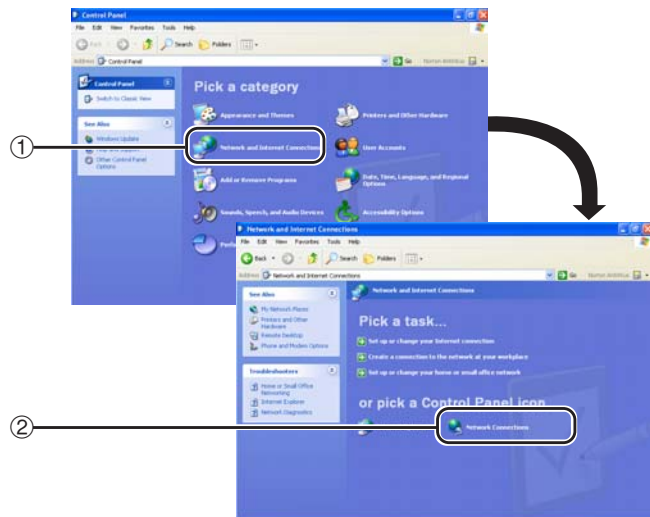
**1** Log on the network using the administrator's account for the computer.

**2** Click "Start", and click "Control Panel".

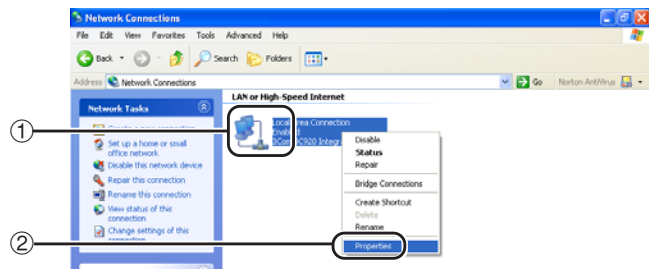


**3** Click "Network and Internet Connections", and click "Network Connections" in the new window.

- This manual uses examples to explain the operations in Category View. If you are using Classic View, double-click "Network Connections".

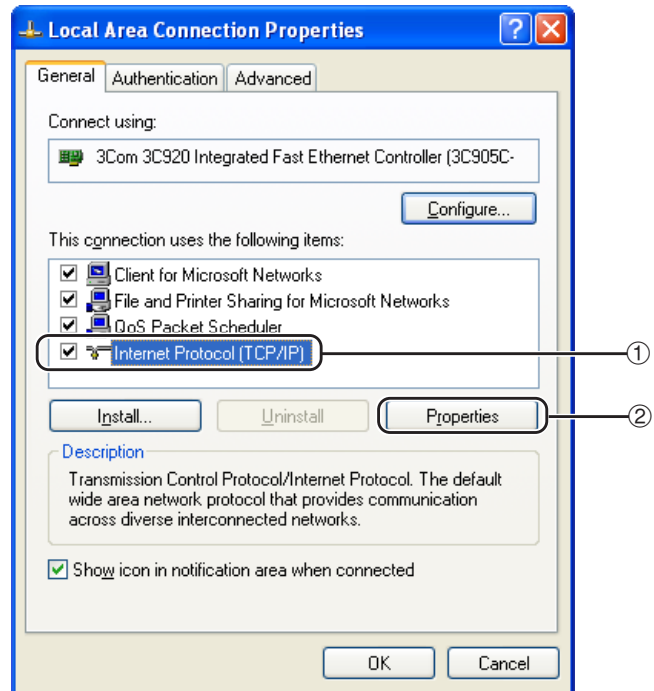


**4** Right-click "Local Area Connection" and select "Properties" from the menu.



## Setting up the Projector Network Environment

- 5** Click “Internet Protocol (TCP/IP)”, and click the “Properties” button.

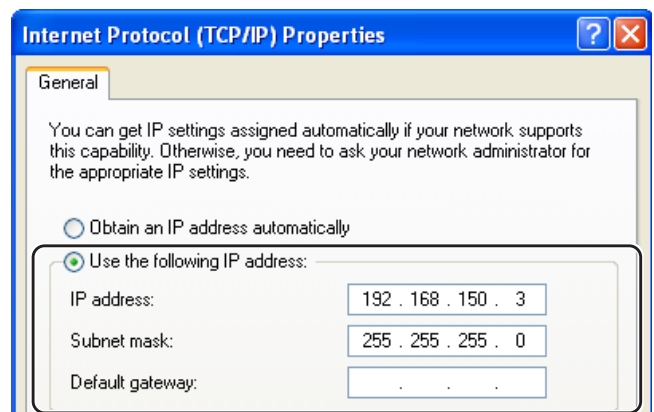


- 6** Confirm or change an IP address for the setup computer.

- ① Confirm and note the current IP address, Subnet mask and Default gateway.

Make sure to note the current IP address, Subnet mask and Default gateway as you will be required to re-set them later.

- ② Set temporarily as follows :  
**IP address : 192.168.150.3**  
**Subnet mask : 255.255.255.0**  
**Default gateway : (Do not input any values.)**



### Note

- When “DHCP Client” is set to “OFF” on the projector:  
IP address : 192.168.150.2  
Subnet mask : 255.255.255.0  
Default gateway : 0.0.0.0

- 7** After setting, click the “OK” button, and then restart the computer.

After confirming or setting, proceed to “3. Setting up Network Connection for the Projector”.

## 3. Setting up a Network Connection for the Projector

Settings for such items as the projector's IP address and subnet mask are compatible with the existing network.

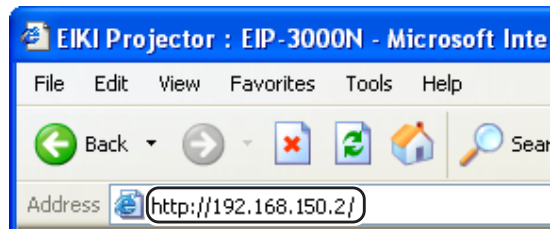
Set each item on the projector as follows. (See page 50 on the owner's manual of the projector.)

DHCP Client : Off

IP Address : 192.168.150.002

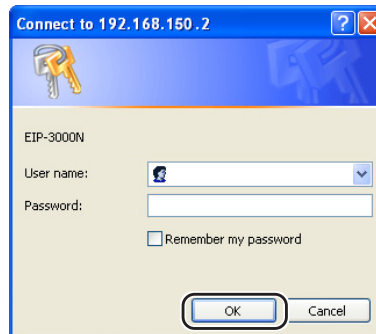
Subnet Mask : 255.255.255.000

**1** Start Internet Explorer (version 5.0 or later) on the computer, and enter "http://192.168.150.2/" in "Address", and then press the "Enter" key.

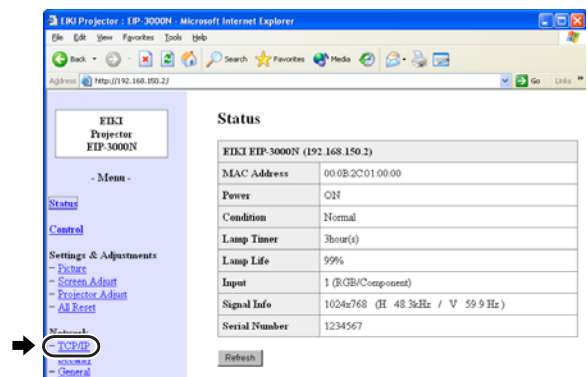


**2** If a user name and a password have not yet been set, just click the "OK" button.

- If a user name and a password have been set, input the user name and the password, and click the "OK" button.
- If the user name or password is entered incorrectly three times, an error message will be displayed.



**3** When the screen as shown on the right appears, click "TCP/IP".



# Setting up the Projector Network Environment

## 4 The TCP/IP setting screen appears, ready for network settings for the projector.

Items	Setting example / Remarks
New Password	You can set the password to protect the TCP/IP setting.
DHCP Client	Select "ON" or "OFF" to determine whether to use DHCP Client.
IP Address	You can set this item when "DHCP Client" is set to "OFF". Factory default setting: 192.168.150.2 Enter an IP address appropriate for the network.
Subnet Mask	You can set this item when "DHCP Client" is set to "OFF". Factory default setting: 255.255.255.0 Set the subnet mask to the same as that of the computer and equipment on the network.
Default Gateway	You can set this item when "DHCP Client" is set to "OFF". Factory default setting: 0.0.0.0 * When not in use, set to "0.0.0.0".
DNS Server	Factory default setting: 0.0.0.0 * When not in use, set to "0.0.0.0".

### Note

- Confirm the existing network's segment (IP address group) to avoid setting an IP address that duplicates the IP addresses of other network equipment or computers. If "192.168.150.2" is not used in the network having an IP address of "192.168.150.XXX", you don't have to change the projector IP address.
- For details about each setting, consult your network administrator.

## 5 Click the "Apply" button.

## 6 The set values appear. Confirm that the values are set properly, and then click the "Confirm" button.

- Close the browser.
- This completes the network settings.
- After setting items, wait for 10 seconds and then re-access.
- Change the IP address of the setting computer back to its original address, which you have noted down in Step 6-① on page 10, and then connect the computer and the projector to the network.

### Network - TCP/IP

New Password	<input type="text"/>
	(4 digits)
Reconfirm	<input type="text"/>

This password is for protection of the TCP/IP setting.

DHCP Client	<input checked="" type="radio"/> OFF <input type="radio"/> ON
IP Address	<input type="text" value="192"/> <input type="text" value="168"/> <input type="text" value="150"/> <input type="text" value="2"/>
Subnet Mask	<input type="text" value="255"/> <input type="text" value="255"/> <input type="text" value="255"/> <input type="text" value="0"/>
Default Gateway	<input type="text" value="0"/> <input type="text" value="0"/> <input type="text" value="0"/> <input type="text" value="0"/> * "0.0.0.0" means "Using no default gateway."

DNS Server	<input type="text" value="0"/> <input type="text" value="0"/> <input type="text" value="0"/> <input type="text" value="0"/> * "0.0.0.0" means "Using no DNS server."
------------	---

### Network - TCP/IP

New Password	<input type="text"/>
	(4 digits)
Reconfirm	<input type="text"/>

This password is for protection of the TCP/IP setting.

DHCP Client	<input checked="" type="radio"/> OFF <input type="radio"/> ON
IP Address	<input type="text" value="192"/> <input type="text" value="168"/> <input type="text" value="150"/> <input type="text" value="2"/>
Subnet Mask	<input type="text" value="255"/> <input type="text" value="255"/> <input type="text" value="255"/> <input type="text" value="0"/>
Default Gateway	<input type="text" value="0"/> <input type="text" value="0"/> <input type="text" value="0"/> <input type="text" value="0"/> * "0.0.0.0" means "Using no default gateway."

DNS Server	<input type="text" value="0"/> <input type="text" value="0"/> <input type="text" value="0"/> <input type="text" value="0"/> * "0.0.0.0" means "Using no DNS server."
------------	---

### Network - TCP/IP

The TCP/IP settings will be changed as below.

IP Address : 192.168.150.2  
Subnet Mask : 255.255.255.0  
Default Gateway : 0.0.0.0  
DNS Server : 0.0.0.0

Do you want to change the TCP/IP settings?

After you click "Confirm", if you want to continue to operate this projector via the network, please wait for 10 seconds and then re-access to "192.168.150.2".

# Controlling the Projector via LAN

After connecting the projector to your network, enter the projector IP address in “Address” on Internet Explorer (version 5.0 or later) using a computer on the network to start a setup screen that will enable control of the projector via the network.

## Controlling the Projector Using Internet Explorer (Version 5.0 or later)

Complete connections to external equipment before starting the operation. (See pages 21-27 on the owner’s manual of the projector.)  
Complete the AC cord connection. (See page 27 on the owner’s manual of the projector.)

### Note

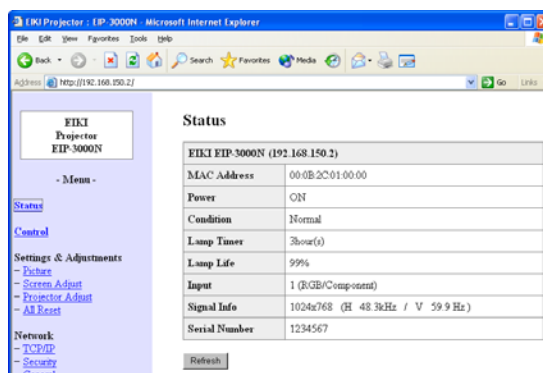
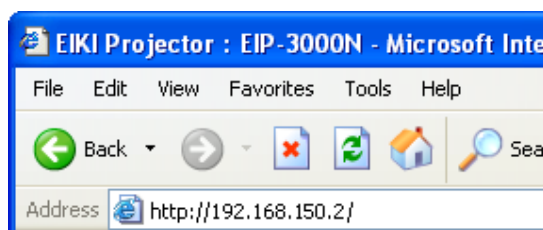
- When connecting the projector to the LAN, use a LAN cable (Category 5). When connecting the projector to a hub, use a straight-through cable.

**1** Start Internet Explorer (version 5.0 or later) on the computer.

**2** Enter “http://” followed by the projector IP address set by the procedure on page 12 followed by “/” in “Address”, and then press the “Enter” key.

- When “DHCP Client” is set to “OFF” on the projector, IP address is 192.168.150.2. If you did not change the IP address in “3. Setting up a Network Connection for the Projector” (pages 11-12), enter “http://192.168.150.2/”.

**3** A screen for controlling the projector appears, ready for performing various status conditions, control, and settings.



## Controlling the Projector via LAN

### Confirming the Projector Status (Status)

#### Status

EIKI EIP-3000N (192.168.150.2)	
MAC Address	00:0B:2C:01:00:00
Power	ON
Condition	Normal
Lamp Timer	3hour(s)
Lamp Life	99%
Input	1 (RGB/Component)
Signal Info	1024x768 (H 48.3kHz / V 59.9Hz)
Serial Number	1234567

Refresh

On this screen, you can confirm the projector status. You can confirm the following items :

- MAC Address
- Power
- Condition
- Lamp Timer
- Lamp Life
- Input
- Signal Info
- Serial Number

#### Note

- If you click the “Refresh” button before the screen is displayed completely, an error message (“Server Busy Error”) will be displayed. Wait for a moment and then operate again.
- For details about each item, refer to the owner’s manual of the projector.

### Controlling the Projector (Control)

#### Control

Power	<input type="radio"/> STANDBY <input checked="" type="radio"/> ON
Input Select	INPUT1 (RGB/Component) ▾
Volume	1 ▾
AV Mute	<input checked="" type="radio"/> OFF <input type="radio"/> ON

Refresh

On this screen, you can perform projector control. You can control the following items :

- Power
- Input Select
- Volume
- AV Mute [OFF] [ON]

#### Note

- If you click the “Refresh” button before the screen is displayed completely, an error message (“Server Busy Error”) will be displayed. Wait for a moment and then operate again.
- You cannot operate this page while the projector is warming up.
- While the projector is in standby mode, you can only control “Power ON”.
- For details about each item, refer to the owner’s manual of the projector.

### Setting and Adjusting the Projector (Settings & Adjustments)

Example: “Picture” screen display for INPUT 1  
Settings & Adjustments - Picture(INPUT1)

Picture Mode	<input type="text" value="Presentation"/>
CLR Temp	<input type="text" value="7500K"/>
Bright Boost	<input type="text" value="2"/>
Lamp Setting	<input type="text" value="Bright"/>

Signal Type	<input type="text" value="Auto"/>
-------------	-----------------------------------

On these screens, you can make projector settings or adjustments. You can set or adjust the following items :

- Picture Mode
- CLR Temp
- Bright Boost
- Progressive (INPUT 3/4)
- Lamp Setting
- Resolution Setting
- Signal Type (INPUT 1/2)
- Video System (INPUT 3/4)
- Resize
- Auto Keystone [OFF][ON]
- OSD Display [OFF][ON]
- Background
- Setup Guide [OFF][ON]
- Projection Mode
- OSD Language
- Auto Search [OFF][ON]
- Auto Sync [OFF][ON]
- Auto Power Off [OFF][ON]
- System Sound [OFF][ON]
- Internal Speaker [OFF][ON]
- RS-232C Speed
- Fan Mode [Normal] [High]
- All Reset

#### Note

- If you click the “Refresh” button before the screen is displayed completely, an error message (“Server Busy Error”) will be displayed. Wait for a moment and then operate again.
- You cannot operate this page while the projector is warming up.
- For details about each item, refer to the owner’s manual of the projector.

### Setting the Security (Network – Security)

Network - Security

User Name	<input type="text"/> (MAX 8 characters)
Password	<input type="text"/> (MAX 8 characters)

This user name / password is for accessing via Web browser and Telnet.  
\*You will need to re-login with the new user name / new password after you change the user name / password.

Accept IP Address	<input checked="" type="radio"/> All IP Addresses
	<input type="radio"/> From only specific IP addresses
	Address 1 <input type="text" value="0"/> <input type="text" value="0"/> <input type="text" value="0"/> <input type="text" value="0"/>
	Address 2 <input type="text" value="0"/> <input type="text" value="0"/> <input type="text" value="0"/> <input type="text" value="0"/>
	Address 3 <input type="text" value="0"/> <input type="text" value="0"/> <input type="text" value="0"/> <input type="text" value="0"/>

On this screen, you can make settings relating to security.

Items	Description
User Name	Setting of user name for security protection.
Password	Setting of password for security protection.
Accept IP Address	It is possible to set up to three IP addresses allowing connection to the projector.
All IP Addresses	No limits are set to IP addresses connecting to the projector.
From only specific IP addresses	For security improvement, only an IP address set by “Address 1-3” can be connected to the projector.

#### Note

- User Name and Password can be up to 8 characters.
- You can input the characters below :  
a-z, A-Z, 0-9, -, \_

## Controlling the Projector via LAN

### Making General Settings for the Network (Network - General)

#### Network - General

Projector Name	EIP-3000N (MAX 12 characters)
Auto Logout Time	5 minute(s) (0-65535) * If the set value is made 0, the Auto Logout function is disabled.
Data Port	10002 (1025-65535)
Search Port	9300 (1025-65535)

Apply

Refresh

On this screen, you can make general settings relating to the network.

Items	Description
Projector Name	Setting the projector name.
Auto Logout Time	Setting the time interval in which the projector will be automatically disconnected from the network in units of a minute (from 1 to 65535 minutes). If the set value is made 0, the Auto Logout function is disabled.
Data Port	Setting the TCP port number used when exchanging data with the projector (from 1025 to 65535).
Search Port	Setting the port number used when searching for the projector (from 1025 to 65535).

After clicking the “Apply” button, the set values appear. Confirm that the values are set properly, and then click the “Confirm” button.

#### Note

- After setting items, wait for 10 seconds and then re-access.
- Projector Name can be up to 12 characters.
- You can input the characters below :  
A-Z, 0-9, -, \_ (,), space  
(When “a-z” are input, they are converted to “A-Z” automatically.)

### Setting for Sending E-mail when an Error Occurs (Mail - Originator Settings)

#### Mail - Originator Settings

SMTP Server	<input type="text"/> (MAX 64 characters)
Originator E-mail Address	<input type="text"/> (MAX 64 characters)
Originator Name	<input type="text"/> (MAX 64 characters)

Apply

Refresh

On this screen, you can make settings for sending e-mail to report when the projector has generated an error.

Items	Setting example / Remarks
SMTP Server	Setting an SMTP server address for e-mail transmission. e.g.1 : 192.168.150.253 e.g.2 : smtp123.eiki.com * When using a domain name, make settings for the DNS server.
Originator E-mail Address	Setting the projector's e-mail address. The e-mail address set here becomes Originator E-mail Address.
Originator Name	Setting the sender's name. The name set here appears in the “Originator Name” column of the body of the message.

#### Note

- SMTP Server, Originator E-mail Address and Originator Name can be up to 64 characters.
- You can input the characters below:  
SMTP Server and Originator E-mail Address :  
a-z, A-Z, 0-9, !, #, \$, %, &, \*, +, -, /, =, ?, ^, {, |, }, ~, \_ ' , : , @, ` (You can input “@” only one time for “Originator E-mail Address”.)  
Originator Name : a-z, A-Z, 0-9, -, \_ (,), space
- If the settings of “3. Setting up a Network Connection for the Projector” on pages 11 and 12 are incorrectly set, e-mail will not be send.

### Setting Error Items and Destination Addresses to which E-mail is to be Sent when an Error Occurs (Mail - Recipient Settings)

#### Mail - Recipient Settings

Recipient Addresses	E-mail Address (MAX 64 characters)	Error Mail			Test
		Lamp	Temp	Fan	
1	<input type="text"/>	<input type="checkbox"/>	<input type="checkbox"/>	<input type="checkbox"/>	Test
2	<input type="text"/>	<input type="checkbox"/>	<input type="checkbox"/>	<input type="checkbox"/>	Test
3	<input type="text"/>	<input type="checkbox"/>	<input type="checkbox"/>	<input type="checkbox"/>	Test
4	<input type="text"/>	<input type="checkbox"/>	<input type="checkbox"/>	<input type="checkbox"/>	Test
5	<input type="text"/>	<input type="checkbox"/>	<input type="checkbox"/>	<input type="checkbox"/>	Test

Apply

Refresh

On this screen, you can input e-mail destinations to which error notification (error items) e-mails are sent.

Items	Description
E-mail Address	Set addresses to which error notification e-mail is sent. You can set up to five addresses.
Error Mail (Lamp, Temp, Fan)	Error e-mail is sent on the error items checked in their check boxes.
Test	Send test e-mail. This allows you to confirm that the settings for e-mail transmission are properly set.

#### Note

- E-mail Address can be up to 64 characters.
- You can input the characters below :  
a-z, A-Z, 0-9, !, #, \$, %, &, \*, +, -, /, =, ?, ^, {, |, }, ~, \_ , ' , , @, ` (You can input "@" only one time.)
- For details about error items, refer to the owner's manual of the projector.

### Setting Error Items and the URL that are to be Displayed when an Error Occurs (Service & Support - Access URL)

#### Service & Support - Access URL Registration

Access URL	Condition (MAX 64 characters)	Condition				Test
		Always	Lamp	Temp	Fan	
1 <input type="text" value="http://www.xxxxxxx"/>	<input type="checkbox"/>	<input type="checkbox"/>	<input type="checkbox"/>	<input type="checkbox"/>	Test	
2 <input type="text"/>	<input type="checkbox"/>	<input type="checkbox"/>	<input type="checkbox"/>	<input type="checkbox"/>	Test	
3 <input type="text"/>	<input type="checkbox"/>	<input type="checkbox"/>	<input type="checkbox"/>	<input type="checkbox"/>	Test	
4 <input type="text"/>	<input type="checkbox"/>	<input type="checkbox"/>	<input type="checkbox"/>	<input type="checkbox"/>	Test	
5 <input type="text"/>	<input type="checkbox"/>	<input type="checkbox"/>	<input type="checkbox"/>	<input type="checkbox"/>	Test	

Apply

Refresh

On this screen, you can make settings of the URL and error items that are to be displayed when the projector has generated an error.

Items	Description
Access URL	Set the URL that is to be displayed when an error occurs. You can set up to five addresses.
Condition (Always, Lamp, Temp, Fan)	The URL is displayed when an error checked in their check boxes occurs.
Test	The set URL site is test-displayed. This allows you to confirm that the URL site is properly displayed.

#### Example of the display when an error occurs Status

EIKI EIP-3000N (192.168.150.2)	
MAC Address	00:0B:2C:01:00:00
Power	STANDBY
Condition	The cooling fan is not operating.
	Access URL 1 <a href="http://www.xxxxxxx">http://www.xxxxxxx</a>
Lamp Timer	3hour(s)
Lamp Life	99%
Input	----
Signal Info	----
Serial Number	1234567

Refresh

# Setting up the Projector Using RS-232C or Telnet

Connect the projector to a computer using RS-232C or Telnet, and open the SETUP MENU on the computer to carry out various settings for the projector.

## When Connecting Using RS-232C

**1** Launch general purpose terminal emulator.

**2** Input settings for the RS-232C port of the terminal emulator as follows.

Baud Rate : 9600 bps\*  
Data Length : 8 bit  
Parity Bit : None  
Stop Bit : 1 bit  
Flow Control : None

\* This is the factory default setting. If the value of Baud Rate for the projector has been changed, set Baud Rate here according to the changed value on the projector.

**3** Input “PJS11234” and press the “Enter” key.

**4** “OK” is displayed. Input “PJS25678” and press the “Enter” key within 10 seconds.

**5** “User Name:” is displayed. Input the user name and press the “Enter” key.

• If a user name has not yet been set, just press the “Enter” key.

**6** “Password:” is displayed. Input the password and press the “Enter” key.

• If a password has not yet been set, just press the “Enter” key.

**7** Input “setup” and press the “Enter” key.

• SETUP MENU will be displayed.

### ▼SETUP MENU

```
-----SETUP MENU-----  
[1]IP Address      [2]Subnet Mask    [3]Default Gateway  
[4]User Name      [5>Password  
[6]RS-232C Baud Rate [7]Projector Name [8]DHCP Client  
[A]Advanced Setup [D]Disconnect All  
[V]View All Setting [S]Save & Quit    [Q]Quit Unchanged  
  
setup>
```

### Note

- User name and password are not set in the factory default settings.
- If the user name or password is entered incorrectly three times, SETUP MENU will be quit.

### When Connecting Using Telnet

**1** Click “Start” from the Windows® desktop and select “Run”.

**2** Enter “telnet 192.168.150.2” in the text box that opens up. (If the IP address of the projector is 192.168.150.2.)

**3** Click the “OK” button.

**4** “User Name:” is displayed. Input the user name and press the “Enter” key.

- If a user name has not yet been set, just press the “Enter” key.

**5** “Password:” is displayed. Input the password and press the “Enter” key.

- If a password has not yet been set, just press the “Enter” key.

**6** Input “setup” and press the “Enter” key.

- SETUP MENU will be displayed.

#### ▼SETUP MENU

```
-----SETUP MENU-----
[1]IP Address           [2]Subnet Mask       [3]Default Gateway
[4]User Name           [5]Password
[6]RS-232C Baud Rate   [7]Projector Name   [8]DHCP Client
[A]Advanced Setup     [D]Disconnect All
[V]View All Setting   [S]Save & Quit      [Q]Quit Unchanged

setup>
```

#### Note

- If the IP address has been changed, be sure to enter the new IP address in step 2.
- User name and password are not set in the factory default settings.
- If the user name or password is entered incorrectly three times in steps 4 or 5, SETUP MENU will be quit.

# Setting up the Projector Using RS-232C or Telnet

## SETUP MENU (Main Menu)

### ▼ SETUP MENU

```
-----SETUP MENU-----
[1]IP Address      [2]Subnet Mask    [3]Default Gateway
[4]User Name      [5]Password
[6]RS-232C Baud Rate [7]Projector Name [8]DHCP Client
[A]Advanced Setup [D]Disconnect All
[V]View All Setting [S]Save & Quit   [Q]Quit Unchanged

setup>
```

- [1] IP Address**  
IP address settings. (Page 23)
- [2] Subnet Mask**  
Subnet mask settings. (Page 23)
- [3] Default Gateway**  
Default gateway settings. (Page 23)
- [4] User Name (Factory default setting : Not Required)**  
Setting of user name for security protection. (Page 23)
- [5] Password (Factory default setting : Not Required)**  
Setting of password for security protection. (Page 24)
- [6] RS-232C Baud Rate (Factory default setting : 9600 bps)**  
Baud rate settings for the RS-232C terminals. (Page 24)
- [7] Projector Name (Factory default setting : EIP-3000N)**  
It is possible to assign a projector name. (Page 24)
- [8] DHCP Client**  
DHCP Client settings. (Page 24)
- [A] Advanced Setup**  
Enters ADVANCED SETUP MENU. (Page 25)
- [D] Disconnect All**  
Disconnect all connections. (Page 25)
- [V] View All Setting**  
Displays all setting values. (Page 21)  
Can also be used with ADVANCED SETUP MENU.
- [S] Save & Quit**  
Save set values and quit menu. (Page 22)
- [Q] Quit Unchanged**  
Quit menu without saving setting values. (Page 22)

### Note

- When “DHCP Client” is set to “OFF” on the projector:  
IP address : 192.168.150.2  
Subnet mask : 255.255.255.0  
Default gateway : 0.0.0.0

## ADVANCED SETUP MENU

### ▼ ADVANCED SETUP MENU

```
***** ADVANCED SETUP MENU *****
[1]Auto Logout Time [2]Data Port
[5]Network Ping Test
[6]Accept IP Addr(1) [7]Accept IP Addr(2) [8]Accept IP Addr(3)
[9]Accept All IP Addr [0]Search Port

[!]Restore Default Setting
[Q]Return to Main Menu

advanced>
```

- [1] Auto Logout Time (Factory default setting : 5 minutes)**  
Setting of time until automatic disconnection of network connection. (Page 25)
- [2] Data Port (Factory default setting : 10002)**  
Setting the TCP port number used when exchanging data. (Page 25)
- [5] Network Ping Test**  
It is possible to confirm that a network connection between the projector and a computer etc. is working normally. (Page 26)
- [6] Accept IP Addr(1)**
- [7] Accept IP Addr(2)**
- [8] Accept IP Addr(3)**
- [9] Accept All IP Addr (Factory default setting : Accept All)**  
For improved security, it is possible to set up to three IP addresses allowing connection to the projector. Set IP addresses can be cancelled using [9] Accept All IP Addr. (Page 26)
- [0] Search Port (Factory default setting : 9300)**  
Setting the port number used when searching for the projector. (Page 27)
- [!] Restore Default Setting**  
Restores all setting values that can be set using the menu to the default state. (Page 27)
- [Q] Return to Main Menu**  
Return to the main SETUP MENU. (Page 27)

# Setting up the Projector Using RS-232C or Telnet

Enter number or symbol of item to be selected on the SETUP MENU. When setting, input the details to be set. Setting is carried out one item at a time, and saved at the end.

## View Setting Detail List ([V]View All Setting)

### ▼SETUP MENU

```
-----SETUP MENU-----
[1]IP Address      [2]Subnet Mask  [3]Default Gateway
[4]User Name      [5]Password
[6]RS-232C Baud Rate [7]Projector Name [8]DHCP Client
[A]Advanced Setup [D]Disconnect All
[V]View All Setting [S]Save & Quit   [Q]Quit Unchanged

setup>v
-----
Model Name       : EIP-3000N
Projector Name   : EIP-3000N
MAC Address      : 00:0B:2C:01:00:00
DHCP Client      : Enabled
IP Address       : 192.168.150.2
Subnet Mask      : 255.255.255.0
Default Gateway  : Not Used
RS-232 Baud Rate : 9600 bps
Password         : Not Required
***** (Advanced Status) *****
Data Port        : 10002
Accept IP Address : Accept All
Auto Logout Time : 5 minutes
Search Port      : 9300
```

- ① Enter “v” and press the “Enter” key.  
Display all setting values(\*).

## Set Items

Example: When setting IP Address (change from 192.168.150.2 to 192.168.150.3)

### ▼SETUP MENU

```
-----SETUP MENU-----
[1]IP Address      [2]Subnet Mask  [3]Default Gateway
[4]User Name      [5]Password
[6]RS-232C Baud Rate [7]Projector Name [8]DHCP Client
[A]Advanced Setup [D]Disconnect All
[V]View All Setting [S]Save & Quit   [Q]Quit Unchanged

setup>1
IP Address       : 192.168.150.2
Please Enter     : 192.168.150.3
(change)        -> 192.168.150.3

-----SETUP MENU-----
[1]IP Address      [2]Subnet Mask  [3]Default Gateway
[4]User Name      [5]Password
[6]RS-232C Baud Rate [7]Projector Name [8]DHCP Client
[A]Advanced Setup [D]Disconnect All
[V]View All Setting [S]Save & Quit   [Q]Quit Unchanged

Setup>v
-----
Model Name       : EIP-3000N
Projector Name   : EIP-3000N
MAC Address      : 00:0B:2C:01:00:00
IP Address       : 192.168.150.3
Subnet Mask      : 255.255.255.0
Default Gateway  : Not Used
RS-232C Baud Rate : 9600 bps
Password         : Not Required
***** (Advanced Status) *****
Data Port        : 10002
Accept IP Address : Accept All
Auto Logout Time : 5 minutes
Search Port      : 9300
```

- ① Enter “1” (number of item to be set), and press the “Enter” key.  
Display current IP address (\*1).
- ② Enter IP address to be set and press the “Enter” key.  
Display IP address after change (\*2).
- ③ Enter “v” and press the “Enter” key to verify setting detail list.  
IP address is being changed (\*3).

### Note

- Verification of setting detail list can be omitted.
- Setting details are not effective until they have been saved. (Page 22)
- If an invalid number is entered, an error message (“Parameter Error!”) will be displayed.

## Setting up the Projector Using RS-232C or Telnet

### Save Settings and Quit ([S]Save & Quit)

Save set values and quit menu.

#### ▼SETUP MENU

```
-----SETUP MENU-----
[1]IP Address      [2]Subnet Mask  [3]Default Gateway
[4]User Name      [5]Password
[6]RS-232C Baud Rate [7]Projector Name [8]DHCP Client
[A]Advanced Setup [D]Disconnect All
[V]View All Setting [S]Save & Quit  [Q]Quit Unchanged

setup>s
All Connection will be disconnect.
Continue(y/n)? y
Apply New setting...Done.
```

- ① Enter “s” and press the “Enter” key.
- ② Enter “y” and press the “Enter” key.

### Quit without Saving Set- tings ([Q]Quit Unchanged)

Quit menu without saving setting values.

#### ▼SETUP MENU

```
-----SETUP MENU-----
[1]IP Address      [2]Subnet Mask  [3]Default Gateway
[4]User Name      [5]Password
[6]RS-232C Baud Rate [7]Projector Name [8]DHCP Client
[A]Advanced Setup [D]Disconnect All
[V]View All Setting [S]Save & Quit  [Q]Quit Unchanged

setup>q
Quit Without Saving(y/n)? y
Setting Unchanged.
```

- ① Enter “q” and press the “Enter” key.
- ② Enter “y” and press the “Enter” key.

## Setting up the Projector Using RS-232C or Telnet

The setting procedure for each item will be explained. For the basic procedure, please refer to “Set Items” on page 21.

### IP Address Setting ([1]IP Address)

Setting of IP address.

```
setup>1
IP Address      :192.168.150.2
Please Enter    :192.168.150.3
(change)  -> 192.168.150.3 *
```

- ① Enter “1” and press the “Enter” key.
- ② Enter numerical value to be set and press the “Enter” key.  
Display IP address after change (\*).

### Subnet Mask Setting ([2]Subnet Mask)

Setting subnet mask.

```
setup>2
Subnet Mask    :255.255.255.0
Please Enter    :255.0.0.0
(change)  -> 255.0.0.0 *
```

- ① Enter “2” and press the “Enter” key.
- ② Enter numerical value to be set and press the “Enter” key.  
Display subnet mask after change (\*).

### Default Gateway Setting ([3]Default Gateway)

Setting default gateway.

```
setup>3
note: “0.0.0.0” means “Using no default gateway.”
Gateway Address :0.0.0.0
Please Enter    :192.168.150.1
(change)  -> 192.168.150.1 *
```

- ① Enter “3” and press the “Enter” key.
- ② Enter numerical value to be set and press the “Enter” key.  
Display gateway address after change (\*).

#### Note

- If the values for IP Address, Subnet Mask or Gateway of the projector have been changed via Telnet, the computer cannot be connected to the projector depending on the computer’s network settings.

### User Name Setting ([4]User Name)

Carrying out security protection using user name.

```
setup>4
User Name      :
Please Enter    :EIP-3000N
(change)  -> EIP-3000N *
```

- ① Enter “4” and press the “Enter” key.
- ② Enter user name and press the “Enter” key.  
Display set user name (\*).

#### Note

- User name can be up to 8 characters.
- You can input the characters below :  
a-z, A-Z, 0-9, -, \_
- In the default state, user name is not set.

## Setting up the Projector Using RS-232C or Telnet

### Password Setting ([5]Password)

Carrying out security protection using password.

```
setup>5  
Password :  
(Please Enter : eiki3000  
(change) -> eiki3000 *
```

- 1 Enter “5” and press the “Enter” key.
- 2 Enter password and press the “Enter” key.  
Display set password (\*).

#### Note

- Password can be up to 8 characters.
- You can input the characters below :  
a-z, A-Z, 0-9, -, \_,
- In the default state, the password is not set.

### RS-232C Baud Rate Setting ([6]RS-232C Baud Rate)

Setting of baud rate for RS-232C terminals.

```
setup>6  
0 ... 9600 bps  
2 ... 115200 bps  
Baud Rate Select[0, 2] : 2  
RS-232C Baud Rate : 115200 bps *
```

- 1 Enter “6” and press the “Enter” key.
- 2 Select and enter the number 0 or 2 and press the “Enter” key.  
Display set baud rate (\*).

#### Note

- Set the projector’s baud rate to the same rate as that used by the computer.

### Projector Name Setting ([7]Projector Name)

It is possible to assign a projector name.

```
setup>7  
Projector Name : EIP-3000N  
(Please Enter : MY EIP-3000N  
(change) -> MY EIP-3000N *
```

- 1 Enter “7” and press the “Enter” key.
- 2 Enter projector name.  
Display set projector name (\*).

#### Note

- Projector name can be up to 12 characters.
- You can input the characters below :  
A-Z, 0-9, -, \_, (,), space  
(When “a-z” are input, they are converted to “A-Z” automatically.)
- It is the same as the name which can be confirmed or set, using RS-232C commands “PJO”, “PJN1”, “PJN2” and “PJN3”.

### DHCP Client Setting ([8]DHCP Client)

Setting DHCP Client to “ON” or “OFF”.

Example: When setting DHCP Client to “ON”

```
setup>8  
note: It sets DHCP Client.  
0 ... OFF  
1 ... ON  
DHCP Select[0-1] : 1  
DHCP Client : ON  
  
Success get data from DHCP server.  
[MAC Address ] : [00:0B:2C:01:00:00]  
[IP Address ] : [192.168.150.2]  
[Subnet Mask ] : [255.255.255.0]  
[Default Gateway ] : [0.0.0.0]  
[DHCP IP Address] : [192.168.150.1] *
```

- 1 Enter “8” and press the “Enter” key.
- 2 Enter “1” and press the “Enter” key.  
Display the obtained values (\*).

## Disconnecting All Connections ([D]Disconnect All)

It is possible to disconnect all the TCP/IP connections currently recognized by the projector. Even if the COM Redirect port is fixed in the Busy status due to a problem, it is possible to force the Ready status back by carrying out this disconnection.

```

setup>d
Disconnect All Connections(y/n)?y
Now Disconnecting...
    
```

- ① Enter “d” and press the “Enter” key.
- ② Enter “y” and press the “Enter” key.



**Note**

- If Disconnect All is performed, the connection to the projector via network will be forcibly disconnected.

## Entering ADVANCED SETUP MENU ([A]Advanced Setup)

Enters ADVANCED SETUP MENU.

```

setup>a
***** ADVANCED SETUP MENU *****
[1]Auto Logout Time  [2]Data Port
[5]Network Ping Test
[6]Accept IP Addr(1) [7]Accept IP Addr(2) [8]Accept IP Addr(3)
[9]Accept All IP Addr [0]Search Port

[!]Restore Default Setting
[Q]Return to Main Menu

advanced>
    
```

- ① Enter “a” and press the “Enter” key.

## Setting Auto Logout Time (ADVANCED[1]Auto Logout Time)

If there is no input after a fixed time, the projector automatically disconnects network connection using the Auto Logout function. It is possible to set the time until the projector is automatically disconnected in units of a minute (from 1 to 65535 minutes).

```

advanced>1
Valid range      : 0 to 65535 (minute)
note: if you enter "0", auto logout function will be disable.
Auto Logout Time: 5
Please Enter      :15
(change)         -> 15
    
```

- ① Enter “1” and press the “Enter” key.
- ② Enter numerical value and press the “Enter” key. Display set numerical value (\*).



**Note**

- If the set value is made 0, the Auto Logout function is disabled.
- If an invalid number is entered, an error message (“Parameter Error!”) will be displayed and the screen returns to the ADVANCED SETUP MENU.

## Data Port Setting (ADVANCED[2]Data Port)

Setting of TCP port number. It is possible to set in the range of 1025 to 65535.

```

advanced>2
Valid range      :1025 to 65535
Data Port        :10002
Please Enter      :10005
(change)         -> 10005
    
```

- ① Enter “2” and press the “Enter” key.
- ② Enter numerical value and press the “Enter” key. Display set numerical value (\*).



**Note**

- Set according to need. Normally, use with the factory default setting.

### Carrying out Network Ping Test

#### (ADVANCED[5]Network Ping Test)

It is possible to confirm that a network connection between the projector and a computer etc. is working normally.

```
advanced>5
Ping dest IP addr :192.168.150.1
Please Enter      :192.168.150.152
(change)        -> 192.168.150.152
32 bytes from 192.168.150.152: icmp_seq = 1, time = 0 ms
32 bytes from 192.168.150.152: icmp_seq = 2, time = 0 ms
32 bytes from 192.168.150.152: icmp_seq = 3, time = 0 ms
32 bytes from 192.168.150.152: icmp_seq = 4, time = 0 ms
```

- 1 Enter “5” and press the “Enter” key.
- 2 Enter IP address of device to be tested and press the “Enter” key.  
Display entered IP address (\*1).  
Display test result (\*2).

#### Note

- If the “Enter” key is pressed without entering an IP address, the Ping destination IP address used previously is entered.
- If there is a fault with the connection, “Error: No answer” is displayed after a 5 second retry. In this case, please confirm the settings for the projector and the computer, and contact your network administrator.

### Setting of Accept IP Address (ADVANCED[6]Accept IP Addr(1) - [8]Accept IP Addr(3))

It is possible to improve security of the projector by allowing connection from only a prescribed IP address. It is possible to set up to three IP addresses allowing connection to the projector.

```
advanced>6
Accept IP Addr(1) : 0.0.0.0
Please Enter      : 192.168.150.152
(change)        -> 192.168.150.152
```

- 1 Enter “6”, “7” or “8” and press the “Enter” key.
- 2 Enter numerical value and press the “Enter” key.  
Display set numerical value (\*).

#### Note

- To invalidate the Accept IP Address being currently set, enter “0.0.0.0”.
- If there is one or more Accept IP Addr being set, no connections are allowed from IP addresses that are not yet set. They can be cancelled using [9]Accept All IP Addr.

### Accepting All IP Addresses (ADVANCED[9]Accept All IP Addr)

Removes IP addresses set with “Accept IP Addr”.

```
advanced>9
Accept All IP Addresses(y/n)? y
```

- 1 Enter “9” and press the “Enter” key.
- 2 Enter “y” and press the “Enter” key.

#### Note

- At the point in time where “y” was entered, the numerical values for Accept IP Addr(1)-(3) are reset to “0.0.0.0”.
- If “n” is entered, setting is not altered.

## Setting of Search Port (ADVANCED[0]Search Port)

Sets the port number used when searching for the projector from the network.

```
advanced>0
Please Enter Port Number for Search from Computer.
Valid range      : 1025 to 65535
Search Port      : 9300
Please Enter      : 9301
(change)         -> 9301 *
```

- ① Enter “0” and press the “Enter” key.
- ② Enter numerical value and press the “Enter” key. Display set numerical value (\*).



• Set according to need. Normally, use with the factory default setting.

## Return to Default Settings (ADVANCED[!]Restore Default Setting)

Returns all menu setting values to the default state.

```
advanced>!
Restore All Setting to Default(y/n)? y
— User Setting Initialized —
```

- ① Enter “!” and press the “Enter” key.
- ② Enter “y” and press the “Enter” key.



• If the values for IP Address, Subnet Mask or Gateway of the projector have been returned to the default settings via Telnet, the computer cannot be connected to the projector depending on the computer's network settings.

## Return to Main Menu (ADVANCED[Q]Return to Main Menu)

Returns to the main SETUP MENU.

```
advanced>q
-----SETUP MENU-----
[1]IP Address      [2]Subnet Mask   [3]Default Gateway
[4]User Name       [5]Password
[6]RS-232C Baud Rate [7]Projector Name [8]DHCP Client
[A]Advanced Setup  [D]Disconnect All
[V]View All Setting [S]Save & Quit    [Q]Quit Unchanged

setup>
```

- ① Enter “q” and press the “Enter” key. Returns to the SETUP MENU.

## Communication cannot be established with the projector

---

### When connecting the projector using serial-connection

- ◀ Check that the RS-232C terminal of the projector and a computer or the commercially available controller are connected correctly.
- ◀ Check that the RS-232C cable is a cross-over cable.
- ◀ Check that the RS-232C port setting for the projector corresponds to the setting for the computer or the commercially available controller.

### When connecting the projector to a computer using network (LAN)-connection

- ◀ Check that the cable's connector is firmly inserted in the LAN terminal of the projector.
- ◀ Check that the cable is firmly inserted into a LAN port for a computer or a network device such as a hub.
- ◀ Check that the LAN cable is a Category 5 cable.
- ◀ Check that the LAN cable is a cross-over cable when connecting the projector to a computer directly.
- ◀ Check that the LAN cable is a straight-through cable when connecting the projector with a network device such as a hub.
- ◀ Check that the power supply is turned on for the network device such as a hub between the projector and a computer.

### Check the network settings for the computer and the projector

- ◀ Check the following network settings for the projector.
  - IP Address  
Check that the IP address for the projector is not duplicated on the network.
  - Subnet Mask  
When the gateway setting for the projector is "0.0.0.0" (Not Used), or the gateway setting for the projector and the default gateway setting for the computer are the same:
    - The subnet masks for the projector and the computer should be the same.
    - The IP address parts shown by the subnet mask for the projector and the computer should be the same.  
(Example)  
When the IP address is "192.168.150.2" and the subnet mask is "255.255.255.0" for the projector, the IP address for the computer should be "192.168.150.X" (X=3-254) and the subnet mask should be "255.255.255.0".
  - Gateway  
When the gateway setting for the projector is "0.0.0.0" (Not Used), or the gateway setting for the projector and the default gateway setting for the computer are the same:
    - The subnets for the projector and the computer should be the same.
    - The IP address parts shown by the subnet mask for the projector and the computer should be the same.  
(Example)  
When the IP address is "192.168.150.2" and the subnet mask is "255.255.255.0" for the projector, the IP address for the computer should be "192.168.150.X" (X=3-254) and the subnet mask should be "255.255.255.0".

#### Note

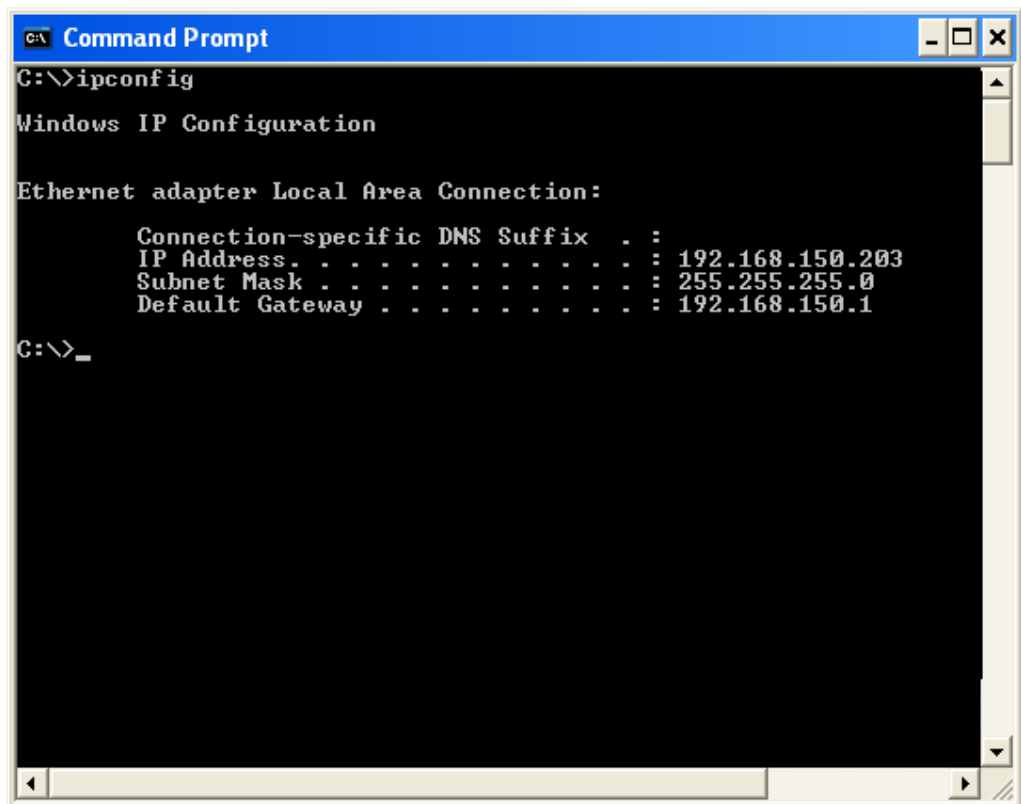
- When "DHCP Client" is set to "OFF" on the projector  
IP address : 192.168.150.2  
Subnet mask : 255.255.255.0  
Gateway address : 0.0.0.0 (Not Used)
- For network settings for the projector, refer to page 11.

- Take the following steps for checking the network settings for the computer.
  - Open a command prompt (MS-DOS Prompt).
    - In the case of Windows® 98 or 98SE: click “START” → “Programs” → “MS-DOS Prompt” in order.
    - In the case of Windows® Me: click “START” → “Programs” → “Accessories” → “MS-DOS Prompt” in order.
    - In the case of Windows® 2000: click “START” → “Programs” → “Accessories” → “Command Prompt” in order.
    - In the case of Windows® XP: click “START” → “All Programs” → “Accessories” → “Command Prompt” in order.
  - After launching the command prompt (MS-DOS Prompt), enter the command “ipconfig”, and press the “Enter” key.

### Note

- Communication may not be established even after carrying out the network settings for the computer. In such cases, restart your computer.

C:\>ipconfig



```
C:\>ipconfig

Windows IP Configuration

Ethernet adapter Local Area Connection:

    Connection-specific DNS Suffix  . : 
    IP Address. . . . .               : 192.168.150.203
    Subnet Mask . . . . .             : 255.255.255.0
    Default Gateway . . . . .         : 192.168.150.1

C:\>_
```

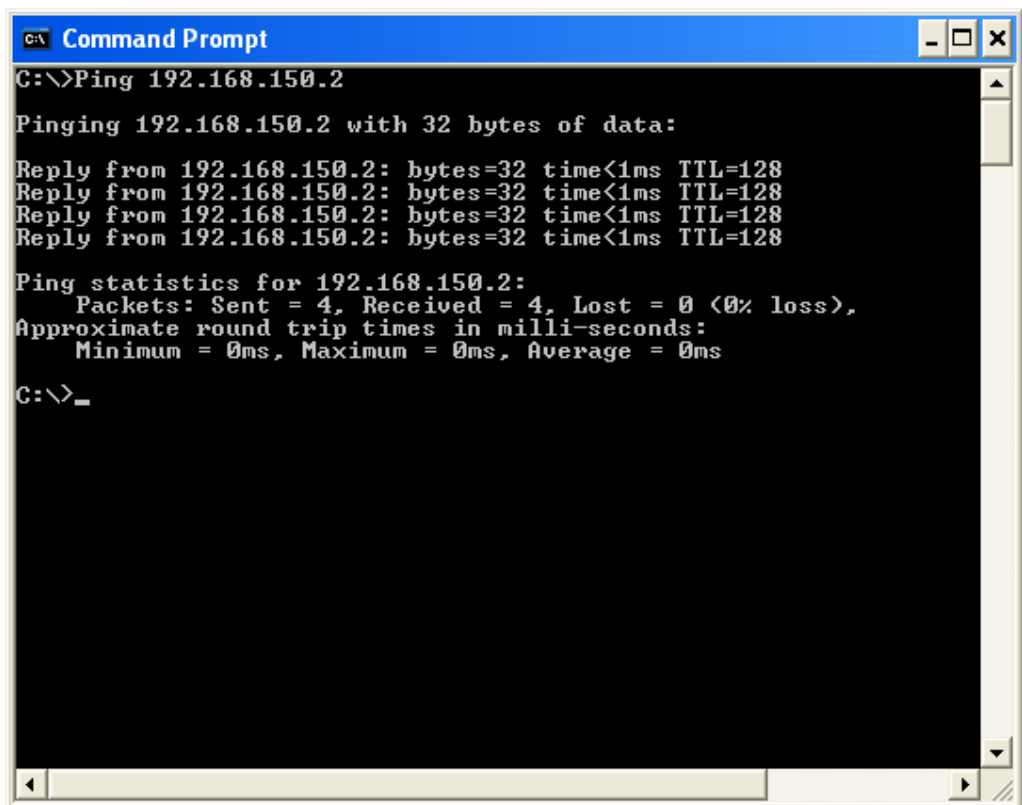
### Note

- Usage examples of ipconfig
  - C:\>ipconfig /? displays how to use “ipconfig.exe”.
  - C:\>ipconfig displays the set IP address, subnet mask and default gateway.
  - C:\>ipconfig /all displays all the setting information related to TCP/IP.

- To return to the Windows® screen, enter “exit” and press the “Enter” key.

## Troubleshooting

- ◀ Check if the “TCP/IP” protocol is operating correctly using the “PING” command. Also, check if an IP address is set.
  1. Open a command prompt (MS-DOS Prompt).
    - In the case of Windows® 98 or 98SE: click “START” → “Programs” → “MS-DOS Prompt” in order.
    - In the case of Windows® Me: click “START” → “Programs” → “Accessories” → “MS-DOS Prompt” in order.
    - In the case of Windows® 2000: click “START” → “Programs” → “Accessories” → “Command Prompt” in order.
    - In the case of Windows® XP: click “START” → “All Programs” → “Accessories” → “Command Prompt” in order.
  2. After launching the command prompt (MS-DOS Prompt) enter a command “PING”.  
Entry example C:\>Ping XXX.XXX.XXX.XXX  
“XXX.XXX.XXX.XXX” should be entered with an IP address to be connected to, such as the projector.
  3. When connecting normally, the display will be as follows.  
(The screen may be slightly different depending on the OS type).  
<Example> when the IP address connected to is “192.168.150.2”



```
C:\>Ping 192.168.150.2

Pinging 192.168.150.2 with 32 bytes of data:

Reply from 192.168.150.2: bytes=32 time<1ms TTL=128
Reply from 192.168.150.2: bytes=32 time<1ms TTL=128
Reply from 192.168.150.2: bytes=32 time<1ms TTL=128
Reply from 192.168.150.2: bytes=32 time<1ms TTL=128

Ping statistics for 192.168.150.2:
    Packets: Sent = 4, Received = 4, Lost = 0 (0% loss),
    Approximate round trip times in milli-seconds:
        Minimum = 0ms, Maximum = 0ms, Average = 0ms

C:\>_
```

4. When a command cannot be sent, “Request time out” will be displayed.  
Check the network setting again.  
If communication can still not be established properly, contact your network administrator.
5. To return to the Windows® screen, enter “exit” and then press the “Enter” key.

### **A connection cannot be made because you have forgotten your user name or your password.**

- ◀ Initialize the settings. (See page 51 on the owner’s manual of the projector.)
- ◀ After the initialization, carry out setting again.